

Nokia IP Security Solutions

Nokia IP350 and Nokia IP355

Nokia IP350 and Nokia IP355 are purpose-built IP security platforms for the small to medium enterprise.

Nokia IP350 and Nokia IP355 combine market-leading Check Point™ security software and the Nokia IPSO™ secure operating system for a reliable and manageable security solution. These cost-effective platforms are ideal for enterprise markets that demand robust systems with excellent performance.

Nokia delivers industry-leading solutions across Nokia IP Security Platforms that meet stringent customer security needs with the best-of-breed Check Point VPN-1 Pro firewall application.

Nokia IP350 and Nokia IP355 deliver best-in-class price/performance against the competition for real world mixed traffic environments, as well as offer high port density in a 1RU system. They afford an excellent choice for small- to mid-sized enterprise customers who wish to grow with robust security, reliability, and ease of management in a low Total Cost of Ownership (TCO) solution.

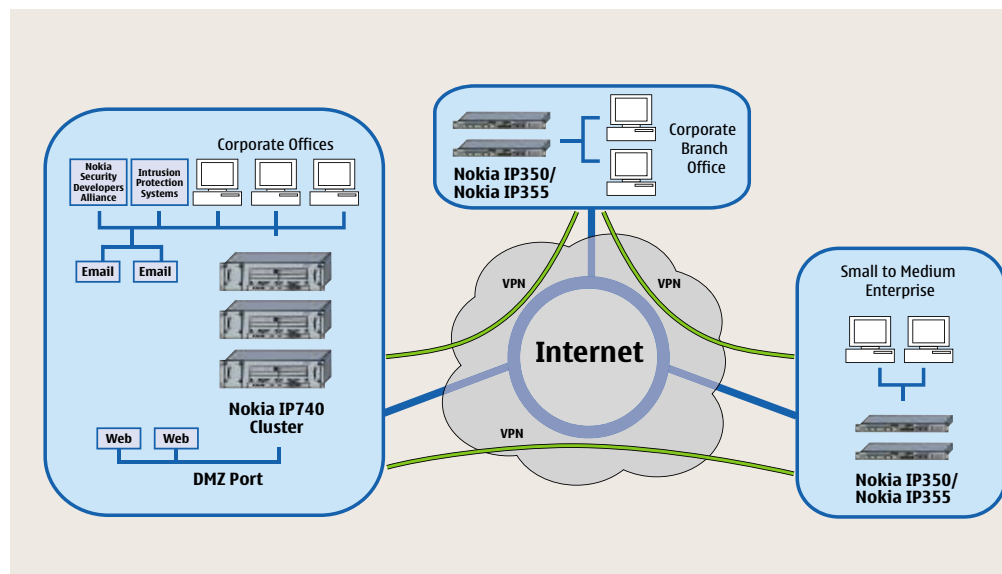
Key features available with Nokia IP350 and Nokia IP355 include on-board encryption, large routing tables (BGP complex OSPF environments), highly reliable flash-based storage (Nokia IP355), maximum expansion capacity with up to ten 10/100 Ethernet ports, synched firewalls in “high availability” environments, and the industry-proven, hardened Nokia IPSO operating system with its web and CLI interface. Nokia IPSO includes a wide variety of high value features, such as patented Nokia IP Clustering, and supports a wide array of protocols as well, such as RADIUS client and server and TACACS+ Client.

Nokia IP350 and Nokia IP355 are versatile products, giving customers the option of a disk- or flash-based system. Both systems offer excellent price/performance and can be used in diverse environments to protect small to mid-sized enterprises or




remote branch offices at the same level as a corporate head office. These platforms are also ideal for small, stand alone companies that require robust, large enterprise proficiency combined with ease of management and high reliability at a low Total Cost of Ownership.

Best of all, security, performance, and reliability are all backed by world-class Nokia First Call—Final Resolution global support.



Technical Specifications

Internet Protocols <ul style="list-style-type: none"> • ARP • BGP-4 [software option] • Bootp/DHCP Relay • CIDR • COPS • Diff Serv (expedited forwarding) • DVMRP • GRE • ICMP • ICMP Router Discovery • IGMP • IGRP [software option] • IP (RFC 791) • IPv6 Core Protocols • OSPF • PIM-DM • PIM-SM • Multicast Tunnels • RIP • RIPv2 with MD5 Authentication • Route Aggregation • Route Redistribution • Static Routes • UDP • Unnumbered Interfaces 	
LAN Support <ul style="list-style-type: none"> • 10/100 Mbps Ethernet • Multimode Fiber Gigabit Ethernet • Transparent (Bridging) Mode • VLAN Tagging 	
WAN Support <ul style="list-style-type: none"> • Frame Relay • HDLC (Cisco-compatible) • ISDN [interface card option] • PPP • T1 [interface card option] • E1 [interface card option] • V.35 [interface card option] • X.21 [interface card option] 	
Performance <ul style="list-style-type: none"> • Firewall – Large Packets - 800 Mbps • VPN – Large Packets - 130 Mbps 3DES - 16,000 FW Connections Per Second 	
Management <ul style="list-style-type: none"> • Nokia Network Voyager (HTTP server) • Command Line Interface (CLI) • Command Line Utilities • DHCP • FTP • SNMPv1/v2c/v3 • SSH (for CLI) • SSL/TLS (for Nokia Network Voyager) • Telnet (for CLI) • Supported in Nokia Horizon Manager 	
Environment <ul style="list-style-type: none"> • Temperature: 41°F to 104°F / 5°C to 40°C • Humidity: 10% - 90% (non-condensing) • Altitude: 10,000 ft. 	
High Availability <ul style="list-style-type: none"> • Nokia IP Clustering • VRRP • Check Point VPN-1/FireWall-1 State Sync 	
Security <ul style="list-style-type: none"> • Access Control Lists • Centralized Authentication • Cryptographic Acceleration • DNS Client • IPSec • MD5 Routing Authentication (RIPv2) • NTP Client and Server • RADIUS Client • Read/Write and Read-Only Administrative Access • S/Key (one-time password) • SSH • SSL/TLS • TACACS+ Client • Traffic Management 	
System Indicators <ul style="list-style-type: none"> • Power and Fault Warning • Port Status 	
Certifications <ul style="list-style-type: none"> • EAL4 Common Criteria (ISO/IEC 15408) • FIPS 140-2 	
Safety <ul style="list-style-type: none"> • UL1950, CAN/CSA 22.2, No. 950-M95, (CE Mark) EN60950:1992, A1, A2:1993, A3:1995, A4:1997, A11:1998 with Japanese National Deviations 	
Emission Compliance <ul style="list-style-type: none"> • FCC Part 15, Subpart B, Class A, EN50024, EN55022A: 1998, CISPR 22 Class A 1985, EN61000-3-2, EN61000-3-3 	
Immunity <ul style="list-style-type: none"> • EN55024: 1998 	
Standard <ul style="list-style-type: none"> • 4 Integrated 10/100 Base-T Ethernet Ports • 2 slots for Network Interface Cards • 2 Type II PCMCIA Encryption Accelerator On Board 	
Optional Interfaces <ul style="list-style-type: none"> • Dual Port 10/100 Ethernet • Quad Port 10/100 Ethernet • Dual Port Gigabit Ethernet, MMF • Single Port serial V.35/X.21 • Single Port T1 • Single Port E1 • ISDN single Port Europe Only • Dual port Gigabit Ethernet, Cu 	
Dimensions <ul style="list-style-type: none"> • Height 1.75 in/4.5 cm (1U) • Depth 16 in/41 cm • Width 17 in/44 cm • Weight 17 lbs/7.7 kg • Standard 19-inch Rack Mountable • Front Access for Maintenance 	
Power Requirements <ul style="list-style-type: none"> • AC Input Voltage 100-120V/200-240VAC • Frequency 50/60Hz • AC Input Current 1.5/.75A 	
	

N13 039 009
 Copyright © 2005 Nokia. All rights reserved. Nokia and Nokia Connecting People are registered trademarks of Nokia Corporation. Other trademarks mentioned are the property of their respective owners. Nokia operates a policy of continuous development. Therefore, we reserve the right to make changes and improvements to any of the products described in this document without prior notice. Check Point, the Check Point logo, VPN-1 and FireWall-1 are trademarks, service marks, or registered trademarks of Check Point Software Technologies Ltd.

European Customer Enquiry Numbers

France +33 170 708 166
 Germany +49 692 222 203 68
 Italy +39 236 003 652
 Spain +34 914 140 777
 Sweden +46 856 610 789
 UK +44 161 601 8908

Email: ipsecurity.emea@nokia.com
www.nokia.com